

1 DESCRIPTION

The ASI1462 is an analog microphone/line input module intended for use in the ASI2416 Modular CobraNet™ Interface. It contains eight microphone pre-amplifiers that operate at a 48kHz sample rate.

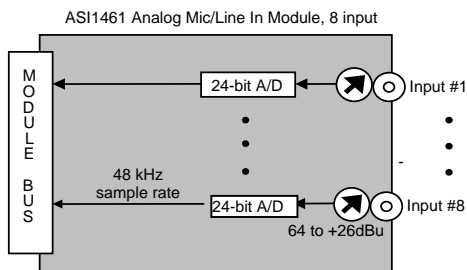
Up to four ASI1462 modules may be used in one ASI2416, giving a maximum of 32 pre-amp inputs, with up to 16 of those inputs able to be streamed over the CobraNet network at one time.

Powerful floating point DSP processing in the ASI2416 provides each microphone pre-amp with a 5-band parametric equalizer and compressor/limiter.

A unique feature of the ASI1462 is its interchangeable I/O connector. A choice of 50pin Centronics (ASI1491), StudioHub+™ (ASI1492), Terminal Block (ASI1493), or 8 ¼" TRS inputs (ASI1494) allows the module to adapt to a variety of interconnection schemes with minimal custom wiring.

2 FEATURES

- Eight microphone pre-amplifiers/line inputs
- Low noise microphone input with selectable 48V phantom supply
- -60 to +26dBu software controlled input level
- -98dB THD+N, 105dB DNR, -120dBu EIN
- Compressor/Limiter
- 5 band parametric equalizer
- Interchangeable Module Connectors with choice of 50pin Centronics connector, Terminal Block, or 8 ¼" TRS inputs
- Up to four modules can be used in one ASI2416



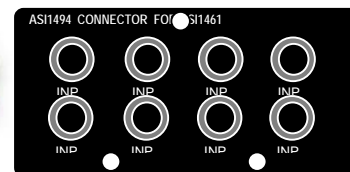
ASI1491
50 pin Centronics



ASI1492
StudioHub



ASI1493
Terminal Block



ASI1494
¼" TRS

3 SPECIFICATIONS

MICROPHONE INPUT

Type	Balanced
Input Level	-60 to +26dBu in 1dB increments
Input Impedance	10K ohms
Phantom Power [4]	48V @ 5mA max per input, software selectable on each input; on and off
EIN [3]	-120dBu
Dynamic Range [1]	>105dB
THD+N [2]	< -98dB
A/D converter	24bit Over sampling
Sample Rates	48 kHz
Frequency Response	20Hz to 20kHz +/-0.25dB

SAMPLE RATE CLOCK

Internal	48kHz (CobraNet)
----------	------------------

CONNECTOR MODULES

ASI1491	50 pin Centronics
ASI1492	StudioHub compatible RJ-45 jacks
ASI1493	5 position 3.81mm pluggable terminal block (8 per module)
ASI1494	8 ¼" TRS inputs

GENERAL

Bus	AudioScience ASI2400 series module bus
Dimensions	(Without Module Connector) 5.5" x 3.25" x 0.6" (140mm x 83mm x 15mm)
Weight	8 oz (227g) max
Operating Temperature	0C to 70C
Power Requirements	+5V @ 500mA

[1] - Dynamic Range measured with Input Level set to +26dBu, using a -60dB 1kHz sine wave and A weighting

[2] - THD+N measured with Input Level set to +21dBu, using a +20dBu 1kHz sine wave sampled at 48kHz, 20-20kHz b/w and A weighting filter

[3] - With Zs = 150ohms and Input level set to -10dBu

[4] - Phantom power is disabled if the input level is higher than -9dBu

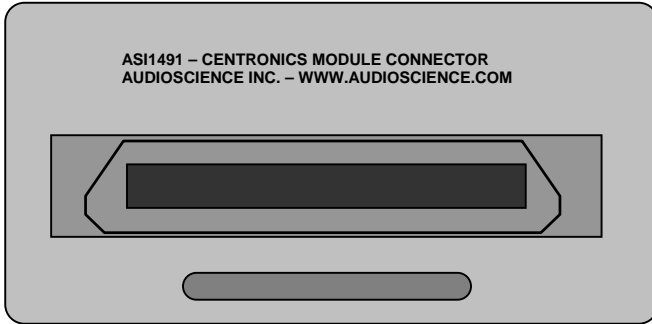


4 REVISIONS

Date	Description
16 February 2010	Initial release.
25 February 2010	Added image of ASI1492 to page 1.
31 March 2010	Preliminary → Released
07 April 2010	Section 5.2: Added Rev numbers.

5 MODULE CONNECTORS

5.1 ASI1491 50pin Centronics

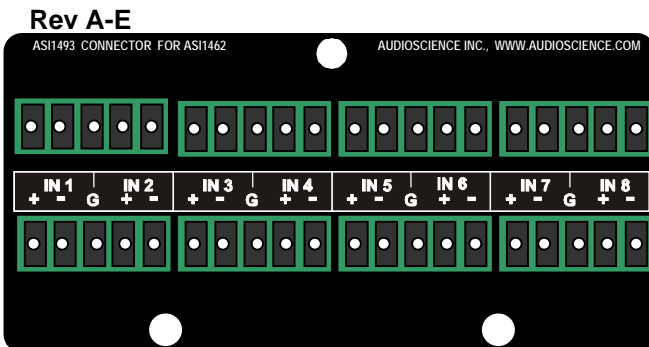


The ASI1491 Module Connector provides a 50pin Centronics connector (also referred to as a 50pin SCSI connector). AudioScience's CBL1146 XLR breakout cable can be used with this connector.

The table on the right shows the pinouts of the connector when used with the ASI1443 AES/EBU Module.

50pin Centronics Connector			
Signal	Pin #	Pin #	Signal
	1	26	
	2	27	
	3	28	
	4	29	
	5	30	
GND	6	31	GND
AES Out 1 -	7	32	AES Out 1 +
AES Out 2 -	8	33	AES Out 2 +
AES Out 3 -	9	34	AES Out 3 +
AES Out 4 -	10	35	AES Out 4 +
	11	36	
	12	37	
	13	38	
	14	39	
	15	40	
	16	41	
	17	42	
	18	43	
	19	44	
	20	45	
	21	46	
	22	47	
	23	48	
	24	49	
GND	25	50	GND

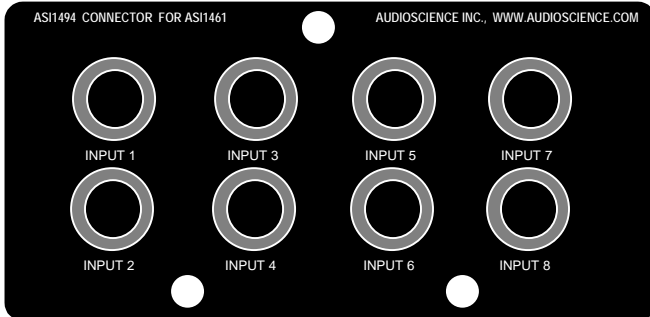
5.2 ASI1493 Terminal Block



The ASI1493 Terminal Block Connector provides 3.81mm pluggable terminal blocks.

Connections for the ASI1461 Mic/Line In Module are shown in the diagram to the left.

5.3 ASI1494 8 ¼” TRS



The ASI1494 8 ¼” TRS Connector provides 8 standard ¼ inch TRS (Tip, Ring, Sleeve) balanced jacks.

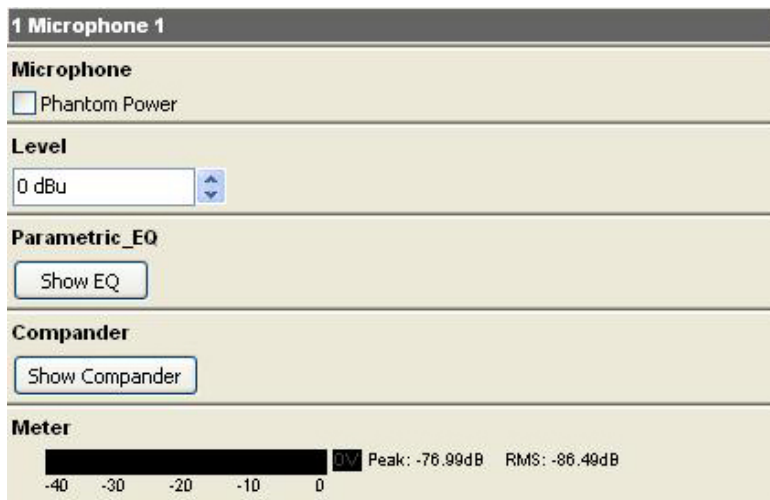
Connections for the ASI1461 Mic/Line In Module are shown in the diagram to the left.

6 CONFIGURATION

The ASI1462 module will come pre-installed in an ASI2416 CobraNet interface. The ASI1462 can be configured over the network using the ASIControl application. For each mic/loin input, the following can be configured

- Phantom power
- Input Level (Sensitivity)
- Parametric Equalizer
- Compressor/Limiter

Here are the controls as viewed in ASIControl's node pane (its right pane):



Further information on each control follows.

6.1 Phantom Power

Microphone
 Phantom Power

The Phantom power can be set on and off independently for each channel by checking or unchecking the checkbox.

Note that the Phantom power cannot be turned on and will be disabled if the Level is higher than -9dBu.

6.2 Input Level

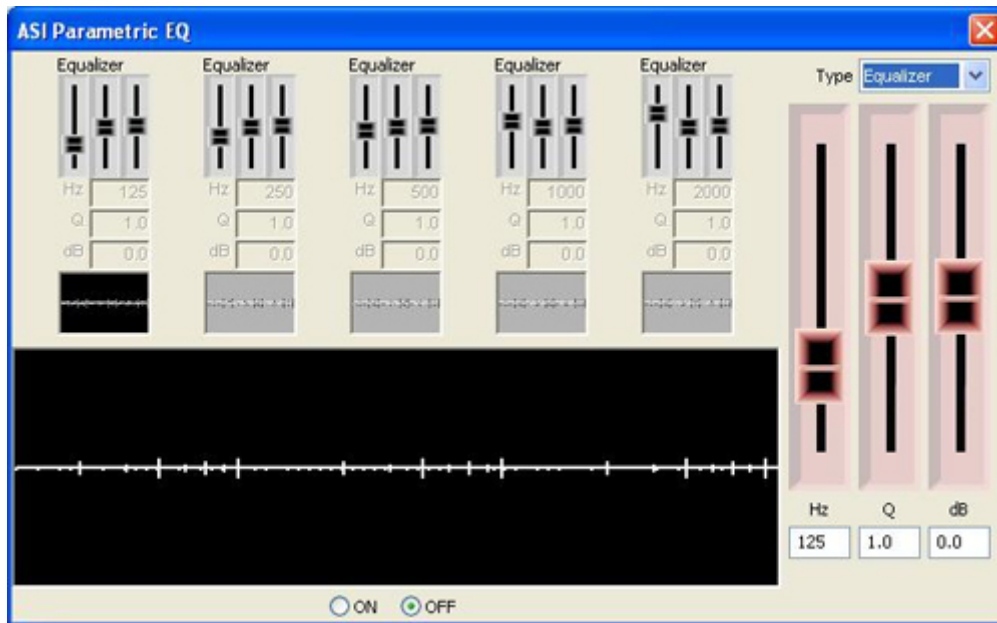
Level
 ▲ ▼

The input level can be set between -60 and +26dBu in 1dB increments by either using the up/down arrows to the right of the Level textbox or by clicking in the Level textbox, typing in a particular number, and then hitting the <Tab> key on the keyboard.

6.3 Parametric Equalizer

Parametric_EQ

Clicking on the Show EQ button will bring up the ASI Parametric EQ pop-up, shown below.



Click on one of the equalizers, this highlights it by changing its smaller graph display black, as shown on the left. From there, select the type of graph you want from the Type selection box in the upper right corner, and adjust levels by sliding the large sliders on the right. Click on the next equalizer and change its parameters as needed.

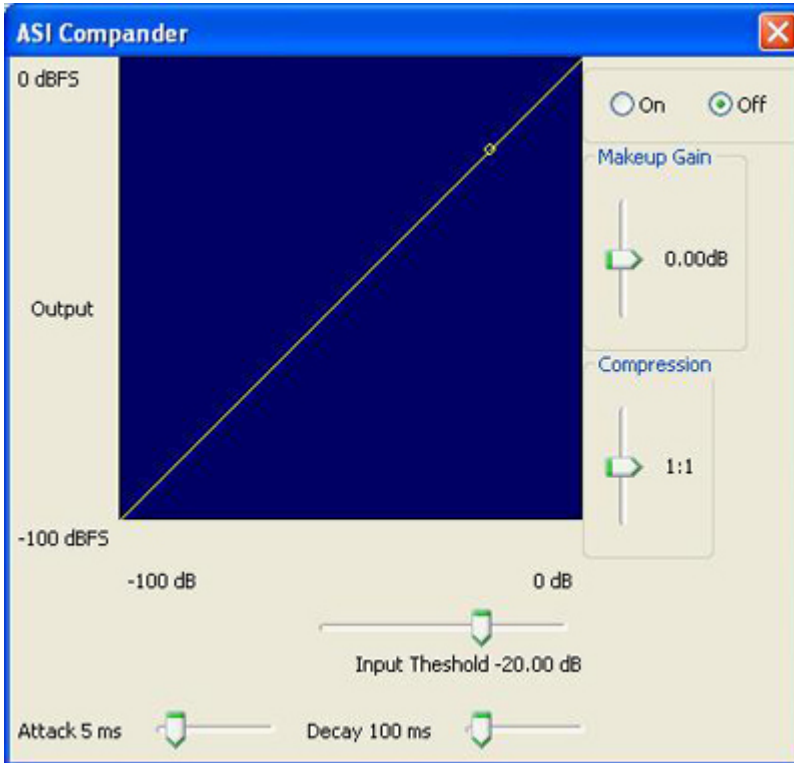
At the bottom of the ASI Parametric EQ pop up, click on the On radio button to activate it.

6.4 Compressor/Limiter

Compander

Show Compander

Clicking on the Show Compander button will bring up the ASI Compander pop-up, shown below.



Adjust the sliders as needed, and select the On radio button to acitvate the ASI Compaander.

<end>