



NOTE 12

Configuring Adobe Audition v2.0 and Higher

1 Introduction

This note details how to set up AudioScience sound cards to be used with Adobe Audition version 2.0 and higher.

For further information on the ASIO driver, please see AudioScience's [Windows ASIO Driver datasheet](#).

2 Driver Information

2.1 The ASIO interface was added to all AudioScience driver types starting with version 3.02. The ASIO interface is supported in AudioScience sound cards from the 5000-series and up. The 4000-series sound cards do not support the ASIO interface; see Section 5 below to configure 4000-series sound cards with Audition 2.0 and higher.

2.2 The AudioScience ASIO driver presents all AudioScience adapters in a machine as one ASIO device starting with driver 3.14.00. The adapters need to be all of the same type and use a common sample rate clock source.

2.3 NOTE: There is a known issue with drivers v3.14.00-v3.14.12 and v4.02.00-v4.02.04 when using Audition's Multitrack View. Use an earlier driver (such as v3.12.07), a later 3.14 driver version (such as v3.14.13), or a later 4.02 driver version (such as v4.02.05) when Multitrack View is required.

3 Install the correct software

3.1 You will need Windows XP Service Pack 2 in order to install Adobe Audition 2.0/3.0. Audition will not work with Windows2000.

3.2 Adobe Audition 2.0/3.0 requires a driver that has ASIO or native DirectSound support. The ASIO driver interface is implemented as an add-on to the AudioScience Windows WAVE, WDM and Combo drivers starting with v3.03. Our WDM and Combo drivers provide DirectSound Support. The ASIO interface is preferred and will give better performance

3.3 You will need ASIMixer v2.01 or greater if you are using AudioScience WAVE driver v3.10.xx or earlier.

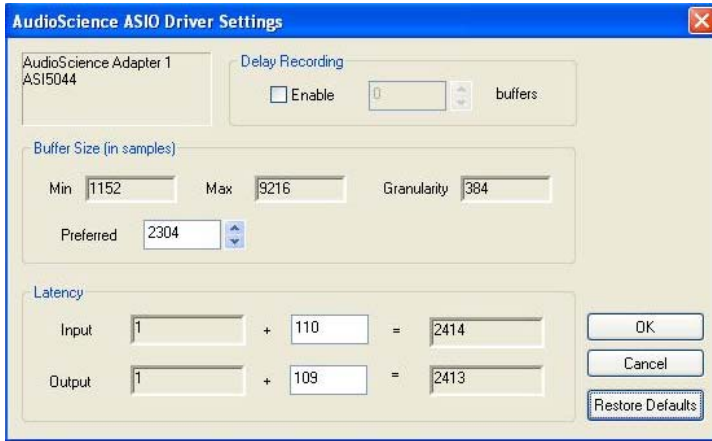
4 Configure Audition v2.0 and Higher for the AudioScience ASIO interface

4.1 Once you have installed the driver and verified your AudioScience sound card is working, launch Adobe Audition.

4.2 Go to MENU: Edit -> Audio Hardware Setup and select AudioScience Adapter N from the Audio Driver List, where N is the number of the AudioScience adapter (for example, N=1 if you only have one AudioScience adapter in the system).

4.3 Uncheck "Release ASIO Driver in Background".

4.4 Click on the Control Panel button to change the AudioScience ASIO driver settings:

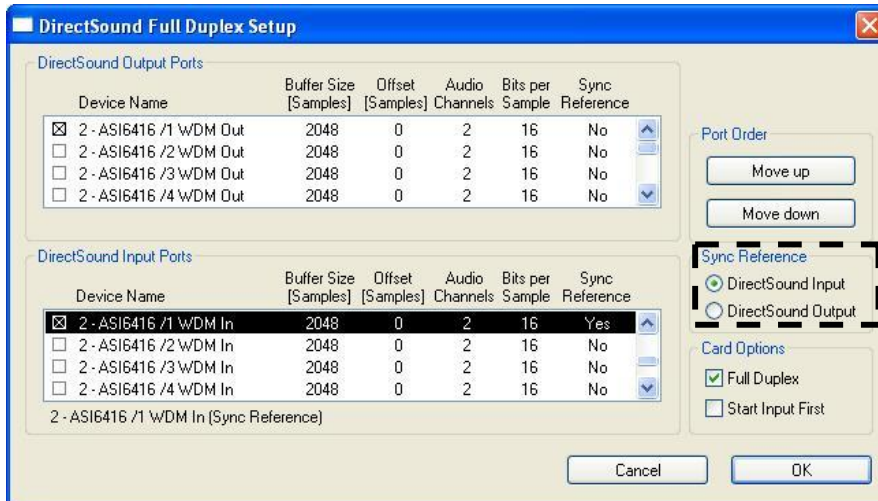


5 Configure Audition 2.0 and Higher for the AudioScience WDM interface

5.1 Once you have installed the driver and verified your AudioScience sound card is working, launch Adobe Audition. You may get the following warning message: "The audio input is not activated. Recording audio is not possible. Please check your input configuration." Click OK. The message may come up a second time; click OK again. Audition should now launch.

5.2 Go to MENU: Edit->Audio Hardware Setup and select Audition Windows Sound from the Audio Driver list.

5.3 Click on the Control Panel button and make sure that for both playback and record devices, one of the WDM versions is selected:



6 Troubleshooting for the AudioScience WDM interface

6.1 If you hear dropouts in playbacks and/or recordings:

6.1.1 Increase the buffer size for the input and/or output devices in Audition. Double click the "Buffer Size" number to edit it. AudioScience's internal testing has had success with a buffer size of 4096, but this may need to be adjusted for specific hardware platforms.

6.1.2 Under "Sync Reference", select either DirectSound Input or DirectSound Output as needed (this area is inactive until you select a WDM device.)

<end>