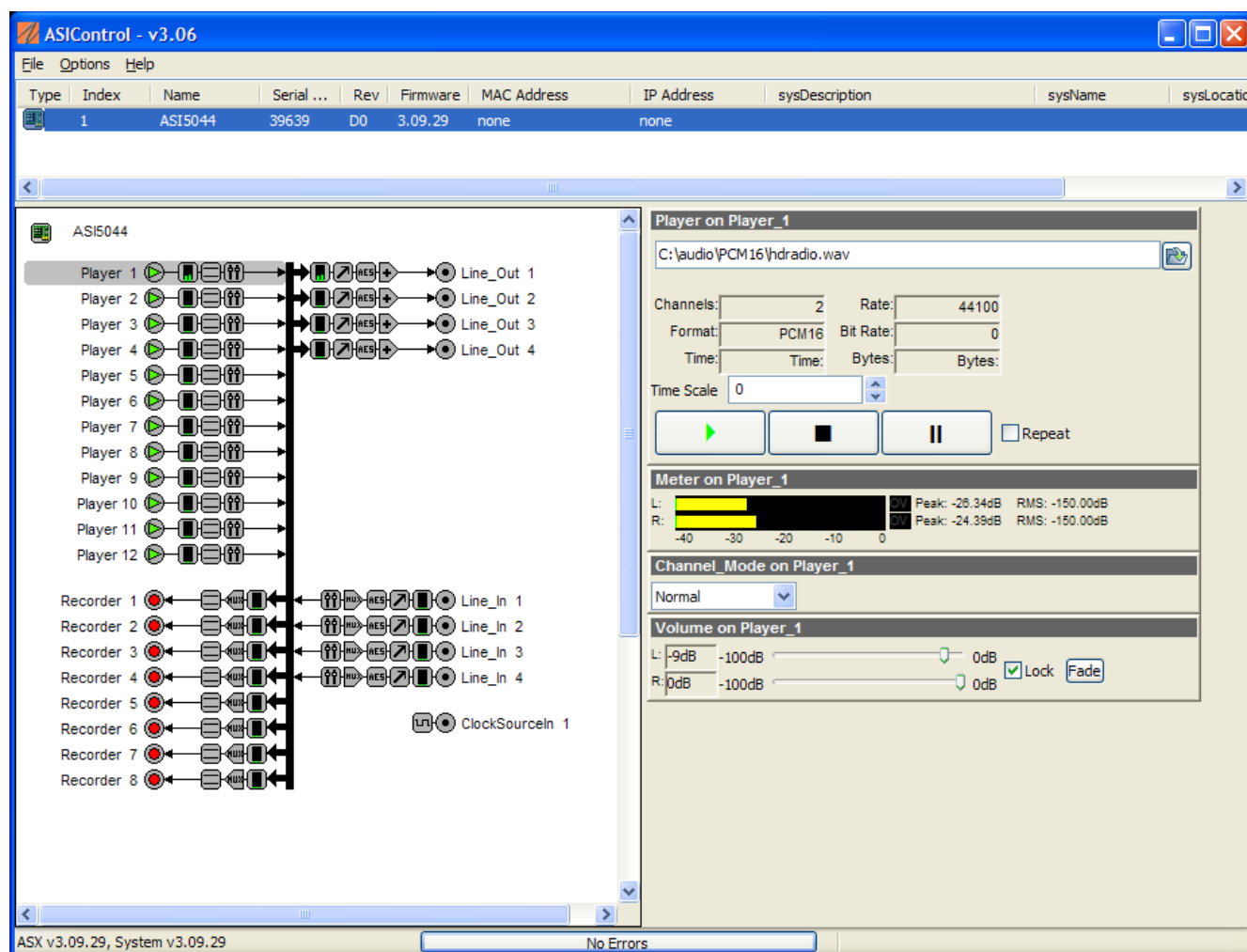


1 INTRODUCTION

ASIControl is an application that allows you to setup and control the functions of an AudioScience sound card when running with the WAVE, WDM or Combo WAVE/WDM drivers. The basic outline and functions a user will typically see in ASIControl are outlined in this document.

Below is a screenshot of ASIControl on a computer with one AudioScience ASI5044 adapter in it. Each adapter appears on the left pane as a 'topology', showing the various inputs and outputs and controls available. The topology is further broken up into 'nodes' (in the screenshot below, the Player 1 node is selected), and the nodes are then broken up into 'controls.'

Clicking on a particular Player, Recorder, Line_Out or Line_In node will bring up all the controls associated with it on the right hand side. In this screenshot, the controls for Player_1 of the ASI5044 are shown in the right side of ASIControl.



2 REVISIONS

Date	Description
21 October 2008	Formatting changes.
30 September 2008	Updated to newer format.
15 September 2009	Section 8.2: removed incorrect info; a CobraNet device can't receive what it transmits.
07 January 2010	Updated Section 8.
19 May 2010	Added information to Save/Restore Configuration.
12 August 2011	Added Parametric Equalizer section.
10 June 2020	Added password section

3 CONTENTS

1	INTRODUCTION	1
2	REVISIONS	2
3	CONTENTS.....	3
4	LIST OF FIGURES.....	5
5	INSTALLATION	6
6	USER INTERFACE	6
6.1	ADAPTER LIST WINDOW	6
6.2	ADAPTER TOPOLOGY WINDOW	6
6.3	NODE CONTROLS WINDOW	6
6.4	ERROR REPORTING	6
7	CONTROLS	7
7.1	ADAPTER INFORMATION	7
7.1.1	Interface	7
7.2	ADAPTER MODE	7
7.2.1	Interface	7
7.3	SSX2 MODE	8
7.3.1	Interface	8
7.4	PLAYER	8
7.4.1	Interface	8
7.4.2	How To Play a File	8
7.4.3	Using embedded sine wave generator.....	9
7.4.4	Developer.....	9
7.4.4.1	Windows APIs	9
7.4.4.2	Linux APIs.....	9
7.5	RECORDER.....	10
7.5.1	Interface	10
7.5.2	How To Record a File.....	10
7.5.3	Developer.....	10
7.5.3.1	Windows APIs	10
7.5.3.2	Linux APIs.....	10
7.6	VOLUME	11
7.6.1	Interface	11
7.6.2	Developer.....	11
7.6.2.1	Windows APIs	11
7.6.2.2	Linux APIs.....	11
7.7	LEVEL.....	12
7.7.1	Interface	12
7.7.2	Developer.....	12
7.7.2.1	Windows APIs	12
7.7.2.2	Linux APIs.....	12
7.8	METER.....	13
7.8.1	Interface	13
7.8.2	Developer.....	13
7.8.2.1	Windows APIs	13
7.8.2.2	Linux APIs.....	13
7.9	CHANNEL_MODE.....	14
7.9.1	Interface	14
7.10	AESEBU_RECEIVER.....	15
7.10.1	Interface	15
7.10.2	PARAMETRIC EQUALIZER	15
7.10.2.1	Interface	15

7.10.2.2	Developer.....	16
7.10.2.2.1	Windows APIs.....	16
7.10.2.2.2	Linux APIs.....	16
7.11	SAVE/RESTORE CONFIGURATION	17
7.11.1	Interface.....	18
7.12	ACCESS CONTROL USING PASSWORDS.....	18
7.12.1	Login in states.....	19
7.12.1.1	Admin	19
7.12.1.2	User.....	19
7.12.1.3	Guest	19
7.12.2	Setting passwords.....	20
1.1.1.1	Logging in.....	20
7.12.3	Logging out.....	21
8	COBRANET	22
8.1	SETTING UP AUDIOSCIENCE SOFTWARE TO CONFIGURE COBRANET	22
8.1.1	Install the Network Driver	22
8.1.2	Select Networked Adapters in ASiControl	22
8.1.3	Connect CobraNet Device to the Network	23
8.1.4	Connect PC to the Network.....	23
8.2	CONFIGURING COBRANET USING ASiCONTROL	23
8.2.1	CobraNet Configuration Interface.....	24
8.2.1.1	CobraNet Device Configuration Section.....	24
8.2.1.2	Transmitter Section	25
8.2.1.3	Receiver Section	26
8.2.1.4	User Control Buttons	26
8.3	HOW TO CONFIGURE AND TRANSMIT A BUNDLE.....	27
8.4	CHANGE IP ADDRESS	27
8.4.1	Interface.....	27
8.5	CONFIGURE COBRANET IP ADDRESS RANGE	28
8.6	CHOOSE A NETWORK INTERFACE	28
8.7	COBRANET REFERENCES.....	28
9	ASiCONTROL COMMAND LINE OPTIONS.....	29
10	PROGRAMMING APIS	30
10.1	HPI.....	30
10.2	ASX	30
10.3	WAVE.....	30
10.4	DIRECTSOUND.....	30
10.5	ASIO	30
10.6	ALSA.....	30
10.7	REFERENCES.....	31

4 LIST OF FIGURES

FIGURE 1. ADAPTER INFORMATION SEEN IN RIGHT SIDE OF ASiCONTROL	7
FIGURE 2. ADAPTER MODE IN ASiCONTROL	7
FIGURE 3. ADAPTER INFORMATION SEEN IN RIGHT SIDE OF ASiCONTROL	8
FIGURE 4. A PLAYER IN ASiCONTROL	8
FIGURE 5. A RECORDER IN ASiCONTROL	10
FIGURE 6. A VOLUME OF A PLAYER IN ASiCONTROL	11
FIGURE 7. USING ASiCONTROL TO SELECT LINE_OUT 1	12
FIGURE 8. LEVEL DISPLAYED BY ASiCONTROL FOR LINE_OUT 1	12
FIGURE 9. A STEREO PEAK METER DISPLAY. THE RMS IS THE GREEN BAR AND THE PEAK IS THE YELLOW BAR	13
FIGURE 10. ASiCONTROL VIEW OF A PLAYER'S CHANNEL MODE CONTROL	14
FIGURE 11. AESEBU_RECEIVER AS SEEN IN ASiCONTROL	15
FIGURE 12 THE PARAMETRIC EQ AS SEEN IN ASiCONTROL	16
FIGURE 13. RIGHT-CLICKING ON A COBRANET DEVICE	17
FIGURE 14. THE SAVE CONFIGURATION DIALOG BOX	18

5 INSTALLATION

ASiControl is installed with all AudioScience Windows drivers from version 3.10 Onwards. There is no separate install. If you installed the driver with network support then ASiControl will allow you to interact with AudioScience and other third party CobraNet devices. Otherwise only bus based (i.e. PCI and/or PCI Express) adapters will be recognized.

6 USER INTERFACE

ASiControl consists of three main windows: the adapter list in the top portion of the window, the adapter topology view on the left hand side, and the node control list on the right hand side.

6.1 Adapter List Window

The top portion of ASiControl shows a list of all the adapters that the application has found. By default, only bus based (i.e. PCI and/or PCI Express) adapters will be shown. If the network portion of the driver is installed (by selecting "Install Standard + Networked Audio Driver" after running the driver installer) and "Local PCI(e) + Networked adapters" is selected from ASiControl's Options→Configure adapter interface, then AudioScience and other third party CobraNet devices will be shown.

Adapters are listed in order of adapter index. For bus-based adapters, this is determined by the adapter index jumper on the card. For AudioScience CobraNet devices this is calculated from the unit's MAC address. Third party CobraNet devices are listed last as they have no AudioScience index.

6.2 Adapter Topology Window

The left hand side of ASiControl contains the topology view of the adapter. It is essentially a block diagram of the device showing the available physical inputs and outputs on the right hand side. On the left hand side, bus based adapters show player and recorder streams, while CobraNet adapters show their network connections.

Each of these inputs and outputs is referred to as a Node and each Node contains one or more Controls on it. The topology shows each Control as a small square icon. A non-exhaustive list of nodes follows:

Line In	Recorder
Line Out	Tuner
AES/EBU In	Clock Source In
AES/EBU Out	CobraNet In
Player	CobraNet Out

Hovering the mouse over a particular node will highlight it. Clicking on a node will bring up the controls resident on that node in the right hand control list.

There is an adapter node in the top left corner of the topology window. Clicking on this will show adapter-specific controls and properties on the right hand side.

6.3 Node Controls Window

The right hand side of ASiControl shows the controls associated with the selected node in the topology view. The controls are arranged, from top to bottom, in order of audio signal flow, i.e. the audio signal can be viewed as entering the node at the top control and leaving at the bottom control.

6.4 Error Reporting

The bottom, center of the ASiControl application displays "**No Errors**" when all is working well. If ASiControl catches any errors, the "**No Errors**" changes to "**Errors**." Clicking there once will open up the Error Log window. Choosing Log-->Save will save the file to a specified location; useful for sending in to AudioScience for troubleshooting. Options to "Clear" and "Close" the Error Log window are also available.

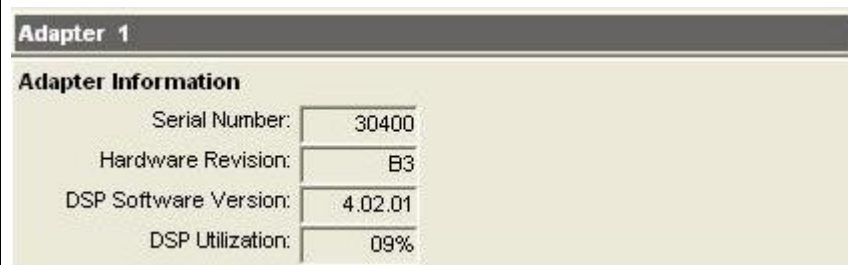
7 CONTROLS

Following is a list of controls found on AudioScience adapters. Not all adapters have all controls. Please see datasheets on specific adapters, available at www.audioscience.com, to learn more.

7.1 Adapter Information

This control displays information about the installed adapter or ASI2416.

7.1.1 Interface



Adapter 1	
Adapter Information	
Serial Number:	30400
Hardware Revision:	B3
DSP Software Version:	4.02.01
DSP Utilization:	09%

Figure 1. Adapter information seen in right side of ASiControl.

Serial Number:

The serial number is displayed here.

Hardware Revision:

This lists the hardware revision.

DSP Software Version:

The DSP software version is displayed; usually the same as the driver version installed.

DSP Utilization:

This shows the loading of the adapter's DSP in percent.

Note: Utilization should be kept below 90%.

7.2 Adapter Mode

The Adapter_Mode control changes the number of players/recorders/lineouts that an adapter has. On certain adapters, not all sample rates/formats are supported; changing the mode of the adapter allows for best functionality with certain sample rates/formats. Different adapters will have different modes available, and not all adapters have modes. Please see datasheets on specific adapters, available at www.audioscience.com for more.

7.2.1 Interface



Adapter Mode
12-Play

Figure 2. Adapter Mode in ASiControl.

7.3 SSX2 Mode

Note: Driver 4.02.00 or higher is required to see this control in AudioScience adapters that support it. (For drivers 3.08 to 3.14, SSX2 mode was implemented by altering the ASIDRV.INI file. For further information on SSX2, see its datasheet under the Technology section at www.audioscience.com.)

The SSX2 Mode control changes the players/recorders of an adapter to be able to play/record multichannel files of 2, 4, 6, or 8 channels. This control is available in the right pane of ASiControl after clicking on the adapter's name in the left pane of ASiControl.

7.3.1 Interface



Figure 3. Adapter information seen in right side of ASiControl.

Selecting “On” using the dropdown arrow changes the SSX2 Mode setting. A reboot is necessary after changing the mode setting. The mode setting is saved to the adapter's EEPROM. After rebooting, one multichannel play or record stream will be created for each 4 play or record streams on the adapter.

SSX2 Mode and Adapter Mode can be used in conjunction with each other. Set the required Adapter Mode, set SSX2 Mode to On, then reboot. For example, an ASI6518 set to “16-Play” in Adapter Mode and “On” in SSX2 Mode, the ASI6518 will show 4 multichannel players after reboot. An ASI6518 set to “8-Play” in Adapter Mode and “On” in SSX2 to on will show 2 multichannel players after reboot.

7.4 Player

The Player control supports playback of an audio file from the computer's hard drive.

7.4.1 Interface

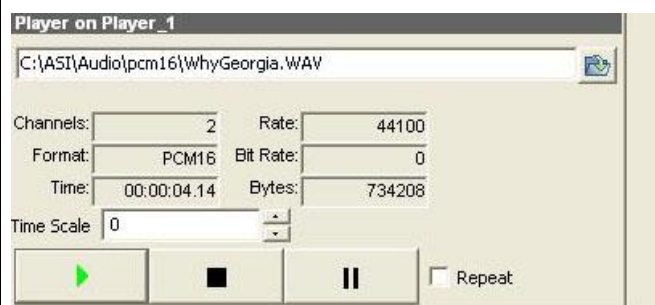


Figure 4. A player in ASiControl.

The first line of static text contains the selected playback file. Below the filename is the file information; playback time and playback bytes, the timescale select options, the player control buttons and the file repeat option.

7.4.2 How To Play a File

The first step in playing a file is to select the file to play. Use the **file icon button** to navigate to the desired file. After opening the file, the complete filename, including the path, will appear immediately to the left of the file open icon. At this point the file information is also filled in so that it contains the following fields: “**Channels**”, “**Rate**”, “**Format**”, and “**Bit Rate**”. Most of there are self-explanatory. The “**Rate**” refers to the sample rate of the audio recorded in the file. The “**Bit Rate**” applies only to MPEG compression and is set to 0 for all other formats.

At this point the percentage time scaling without pitch shift can be set if desired. The default of 0 indicates that time scaling is disabled. The valid range of settings is +/- 20 percent.

The **“Repeat”** check box indicates whether the file should be played again after playback has completed. It can be set either before playback has begun, or while playback is underway.

The file is now ready to be played. To start playback press the **play button**. At this point the **“Time”** and **“Bytes”** fields report playback time and the number of bytes of the file that have been played. Once playback has started, the **stop** and **pause buttons** can be used to stop or pause the playback.

7.4.3 Using embedded sine wave generator

Manually typing in a filename of “~” and pressing play will cause a full-scale 1 kHz sine wave to be played at 48 kHz. The format of the filename string is: “~w, c,f,a,m,s,t”.

w = waveform = SINE (default=SINE)

c = channels = 1..8 (default = 2)

f = frequency = 1000 for 1kHz (default=1000)

a = amplitude = -1 for -1dBFS (default=0dBFS, i.e. full scale)

m = channel mask = 10 for left only, 01 for right only, 11 for stereo etc (default=1 for all channels)

t = sample type = (PCM8,PCM16,PCM24,PCM32,FLOAT32), (default=FLOAT32)

s = sample rate = positive integer (default=48000) [validity depends on adapter]

Defaults can be used if the complete string is not specified, i.e.

“~” -> “~wSINE,c2,f1000,a0,m11,s48000,tFLOAT32”

Any subset of the options may be specified, the remaining options will be set to the defaults. e.g. “~f500” = 500Hz stereo sine wave at 0dBFS, 48kHz sample rate.

7.4.4 Developer

7.4.4.1 Windows APIs

Wave – waveOutOpen(), waveOutWrite(), waveOutClose() etc.

HPI – Output stream functions documented [here](#).

ASX – ASX Player control functions documented [here](#).

DirectSound – TBD.

7.4.4.2 Linux APIs

HPI – TBD.

7.5 Recorder

The Recorder control supports recording of an audio file.

7.5.1 Interface

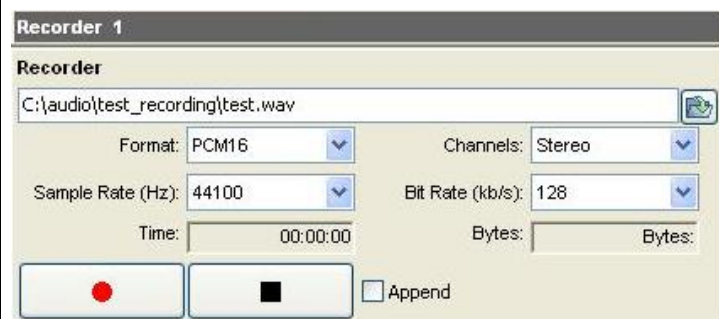


Figure 5. A recorder in ASiControl.

The first line of text contains the name given to the recorded file along with the location where it is to be saved. Below the filename is the file information, the record time and record bytes, the recorder control buttons and the file Append option.

7.5.2 How To Record a File

The first step in recording a file is to have audio coming into the adapter. This can be from a line-in or from one of the players in ASiControl. See appropriate sections in this datasheet to accomplish this. Next, the new file needs a name and place to be saved, or an existing audio file can be selected to be overwritten or appended to. Use the **file icon button** to navigate to the location to create the file and to give it a name, or to open a previously recorded file to overwrite or append to it. Next, from the dropdown arrows, select the number of “**Channels**”, the “**Sample Rate**”, the “**Format**”, and the “**Bitrate**” that the file should be recorded in.

Check the **Append** checkbox to save the audio to the end of an already existing file.

The file is now ready to be recorded. To start recording, press the **record button**. At this point the “**Time**” and “**Bytes**” fields report record time and the number of bytes of the file that have been recorded.

Once recording has started, the **stop** and **pause buttons** can be used to stop or pause the playback.

7.5.3 Developer

7.5.3.1 Windows APIs

Wave – use `waveInOpen()`, `waveInStart()` etc.

HPI – use `HPI_InStreamxxx()` functions.

ASX – use `ASX_Recorder_xxx()` functions.

DirectSound – TBD.

7.5.3.2 Linux APIs

HPI – use `HPI_InStreamxxx()` functions.

ASX – use `ASX_Recorder_xxx()` functions.

ALSA – TBD

7.6 Volume

The Volume control allows the audio signal's gain to be altered in the range of -100 to $+20$ dB.

7.6.1 Interface



Figure 6. A Volume of a Player in ASiControl.

Left and Right display boxes:

Displays the gain settings that the slider bars are set to.

Slider Bars:

Click on the bar with the mouse and drag to desired gain. Once the bars are selected, the left and right arrow keys can also be used to change the settings.

Lock:

When checked, locks the left and right channels to the same gain value. When unchecked, allows the left and right channels to have independent gains. (Note that if an adapter is in SSX2 mode, the Player volumes cannot be unlocked to move the left and right channels independently.)

Autofade:

When pressed, automatically fades the volume to the opposite end of the scale.

7.6.2 Developer

7.6.2.1 Windows APIs

Wave/Mixer – MIXERCONTROL_CONTROLTYPE_VOLUME

This is a Windows standard volume control. Settings are in the range of 0 to 65535, where 0 completely mutes the output and 65535 is the maximum volume.

HPI – [HPI_Volume](#) APIs.

ASX – [ASX_Volume](#) APIs.

DirectSound – TBD.

7.6.2.2 Linux APIs

HPI – [HPI_Volume](#) APIs.

ASX – [ASX_Volume](#) APIs.

ALSA – TBD.

7.7 Level

The levels for the adapter's analog line_outs and line_ins can be adjusted using the level control. In the example below, the Line_Out 1 node in the topology view of ASiControl has been selected. Its Level will show up on the right side of ASiControl. The same is done for a Line_In to see its Level.

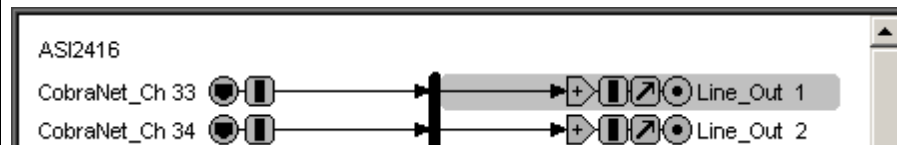


Figure 7. Using ASiControl to select Line_Out 1.

7.7.1 Interface



Figure 8. Level displayed by ASiControl for Line_Out 1.

Level:

The level is specified in dBu. It can be adjusted by clicking the  arrows or by typing values in the edit box.

The level value represents the maximum output of a Line_Out and the maximum input (before clipping) of a Line_In. For example if you wish to use a +4dBu nominal level with 16dB of headroom, you would set the level to $4+16=+20\text{dBu}$.

Consult the specification section for the range of supported levels.

7.7.2 Developer

7.7.2.1 Windows APIs

Wave/Mixer – Analog levels are controlled using `mixerSetControlDetails()` on a control of type signed and with the name Level/Trim.

HPI – Analog levels are controlled using the [HPI_LevelSet\(\)](#) API.

ASX – Analog level are controlled using the [ASX_Level_Set\(\)](#) API.

DirectSound – TBD.

7.7.2.2 Linux APIs

HPI – Analog levels are controlled using the [HPI_LevelSet\(\)](#) API.

ASX – Analog level are controlled using the [ASX_Level_Set\(\)](#) API.

ALSA – TBD.

7.8 Meter

Meters in ASiControl are located on audio nodes and display the audio level as the audio signal passes through the node. Most AudioScience devices return both RMS and peak level readings and ASiControl displays both simultaneously.

7.8.1 Interface

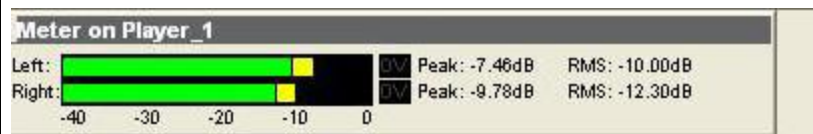


Figure 9. A stereo peak meter display. The RMS is the green bar and the peak is the yellow bar.

To the right of the peak meter is the absolute readings in dBFS. These can be useful when testing input tones of a specific known level.

The ASI2416 has mono (single channel) peak meter, so only a single bar is displayed in that instance.

7.8.2 Developer

7.8.2.1 Windows APIs

Wave/Mixer – Meters are read using `mixerGetControlDetails()` on a control of type signed and with type “Peak” the name “Peak Meter”. A minimum value is 0 and maximum is 32767. The interface returns the peak readings only, not the RSM level. It confirms to expected Windows functionality.

HPI – Meters are read using the [HPI Meterxxx\(\)](#) API.

ASX – Meters are read using the [ASX Meter xxx\(\)](#) API.

DirestSound – TBD.

7.8.2.2 Linux APIs

HPI – Meters are read using the [HPI Meterxxx\(\)](#) API.

ASX – Meters are read using the [ASX Meter xxx\(\)](#) API.

ALSA – TBD.

7.9 Channel_Mode

The channel mode is a mechanism for handling mono to stereo conversions and directing the output to either left or right channels, as well as outputting left to stereo and right to stereo.

7.9.1 Interface

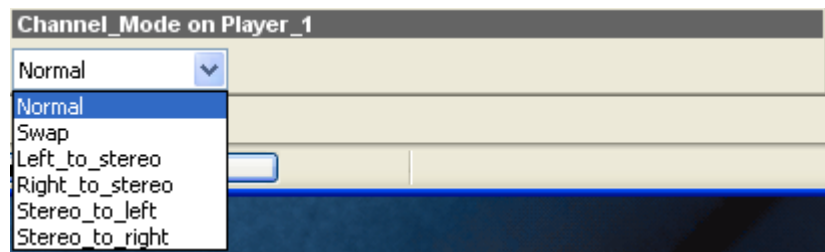
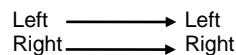


Figure 10. ASiControl view of a player's channel mode control.

Default playback of either mono or stereo files causes audio to be output from the player on both the left and right audio channels. The channel mode control can allow the audio to be directed to either the left only or the right only. Select a channel mode setting from the dropdown list.

Valid settings are:

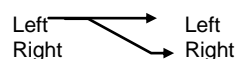
Normal – left channel out left channel, right channel out right channel



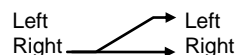
Swap – left channel out right channel and right channel out left channel



Left_to_stereo – left channel out to both left and right channels



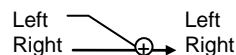
Right_to_stereo – right channel out to both left and right channels



Stereo_to_left – left and right channels out to left channel



Stereo_to_right – left and right channels out to right channel



The Stereo_to_left and Stereo_to_right operations perform a sum of the left and right channels and then divides the result by 2.

7.10 AESEBU_Receiver

Check to see if valid AES/EBU signal is received and its sample rate. For adapters that support it, the digital format can be selected; either AES/EBU (professional) or S/PDIF (consumer).

7.10.1 Interface



Figure 11. AESEBU_Receiver as seen in ASiControl.

Error Status:

When a valid digital input is received, the fields turn green (CRC is not used). If any errors, the fields in question turn red.

Sample Rate:

The sample rate of the incoming audio is displayed.

AES/EBU Format:

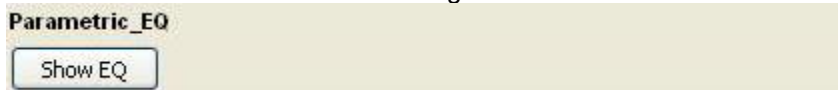
For adapters that support this, the digital format can be specified; either AES/EBU (professional) or S/PDIF (consumer).

7.10.2 PARAMETRIC EQUALIZER

The AudioScience parametric equalizer is a 5 band parametric equalizer. It is located on the Line_In and AES/EBU_In nodes and may be used on both the Line In, AES/EBU In, and Microphone signals. Each of the equalizers 5 bands may be individually programmed with filter type (Bypass, Lowshelf, Highshelf, Equalizer, Lowpass, Highpass, Bandpass, and Bandstop), Q (sharpness), and center frequency.

7.10.2.1 Interface

The Parametric Equalizer is accessed from the ASiControl by clicking on either a Line_In or an AES/EBU_In in the left side of ASiControl then clicking on the "Show EQ" button on the right side of ASiControl.



The Parametric EQ opens, shown below.

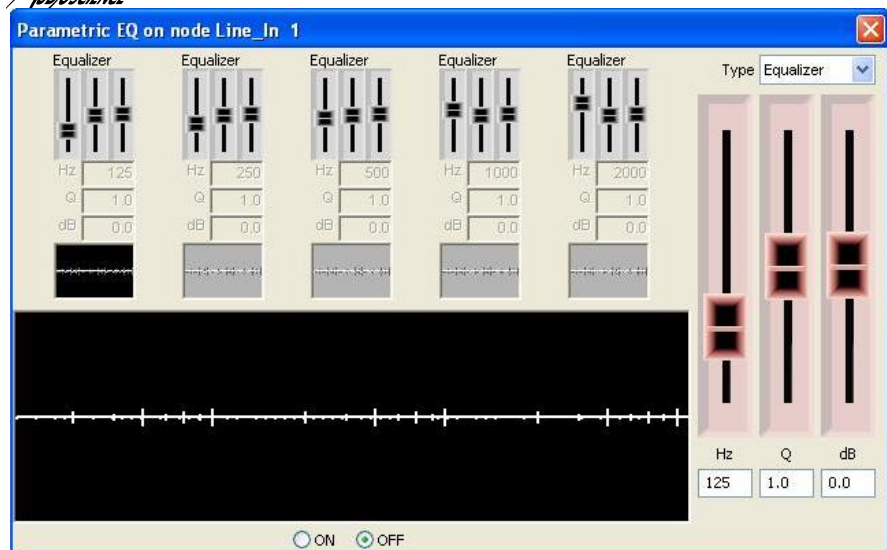


Figure 12 The Parametric EQ as seen in ASiControl

The EQ window contains controls for setting the filter parameters of each of the 5 bands, with a graph showing the combined frequency response of the 5 bands.

Clicking on one of the bands highlights it by changing its small graph display black, as shown on the left band in the image above. Select the type of graph you want from the Type selection box in the upper right corner, and adjust levels by sliding the large sliders on the right. Click on the next equalizer and change its parameters as needed.

At the bottom of the ASI Parametric EQ pop up, click on the On radio button to activate it.

Each filter band has the following parameters:

Filter Type – The shape of the filter. Supported filter types are:

- Bypass – filter is turned off
- Low Shelf – EQ low shelf
- High Shelf – EQ high shelf
- Equalizer – EQ band (default)
- Low Pass – Standard low pass
- High Pass – Standard high pass
- Band Pass – Standard band pass
- Band Stop – Standard band stop/notch

Filter Hz (Freq) – The center frequency of the filter.

Filter Q – The sharpness of the filter. The higher the Q, the more selective the filter is.

Filter dB (Gain) – The gain of the filter at the center frequency.

7.10.2.2 Developer

7.10.2.2.1 Windows APIs

Wave – Use the equalizer mixer control – see “[AudioScience WavX Specification](#)”

HPI – Use the HPI_ParametricEQ_XXXX APIs – see “[AudioScience HPI Specification](#)”

ASX – TBD

DirectSound – TBD

7.10.2.2.2 Linux APIs

HPI – TBD

ASX – TBD

ALSA – TBD

7.11 Save/Restore Configuration

Starting with driver 3.10.00, a device's control settings (trim, level, volume, etc.) can be saved and restored. The Save option supports the storing of all device settings in an XML-format, readable text file. Starting with driver 3.12.00, this includes any CobraNet configuration information such as bundle numbers and channel mappings. (CobraNet variables sysName and sysLocation are not restored with 3.12.00; they need to be set manually. Starting with driver 3.14.00, sysName and sysLocation can be saved and restored.)

The Save/Restore Configuration command is invoked in ASiControl by right clicking on the device as shown in the image below.

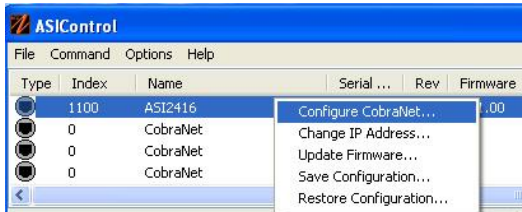


Figure 13. Right-clicking on a CobraNet device.

7.11.1 Interface

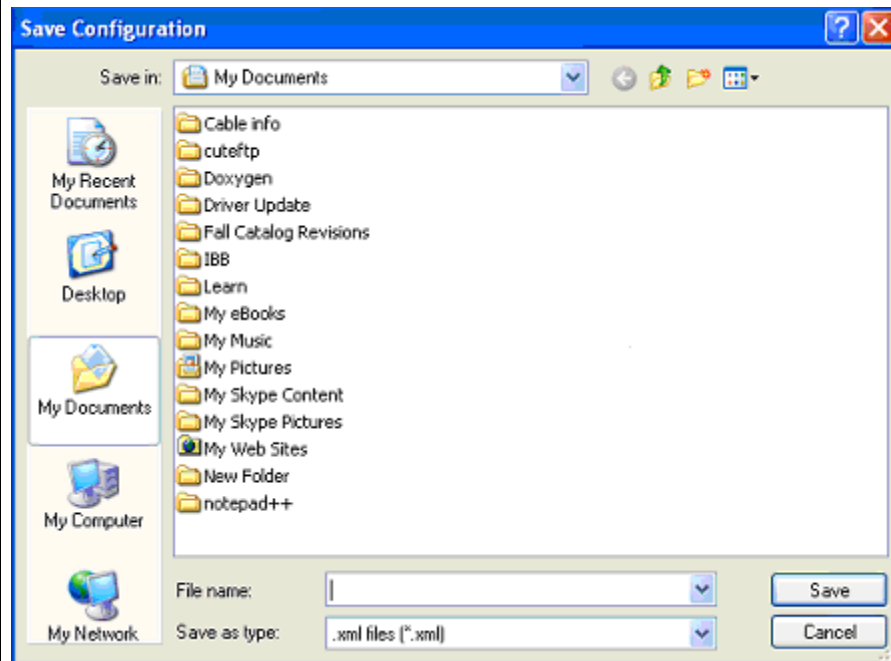


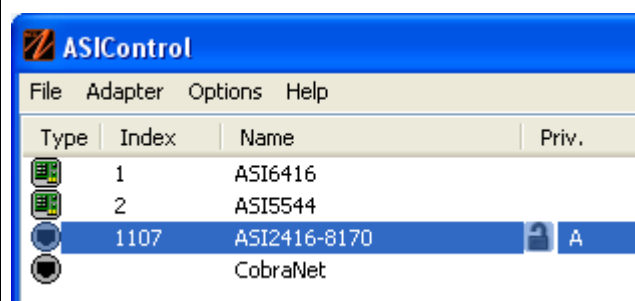
Figure 14. The Save Configuration dialog box.

Use the default location to save configuration settings, or use the Save in dropdown arrow to browse to a different location. Give the file a meaningful name in the File name text box. Click the Save button; the configuration file is saved as type xml.

To retrieve the file, simply select the Restore Configuration option and if necessary, browse to the location of the saved xml file. Click the Open button to install the configuration settings.

7.12 Access control using passwords

Beginning with driver 4.10.00, some AudioScience adapters support password protected access to adapter controls. In ASiControl, an adapter that supports passwords shows a padlock in it's adapter information line of the adapter list window. For example see



By default, if a password has not been set, the adapter operates as if there is no active password. Any user has complete access to all the device functionality.

The access control system supports 3 different “user” login levels. They levels their associated privileges are outlined in the following table.

Username	Controls	Scripting	Configuration Save/restore	Passwords
Admin	Read/write	Read/write	Read/write	Write
User	Read	No access	No access	No access
Guest	Read	No access	No access	No access

Password information is stored on the adapter itself, not the host computer, so if a different computer is used to control the adapter, the same passwords should be used.

7.12.1 Login in states

7.12.1.1 Admin

This is the default state if no passwords have been set on the device. Or, the user has logged in using the Administrator password. This is indicated in the ASiControl as:



7.12.1.2 User

The user successfully has logged in using the User password. This is indicated in the ASiControl as:



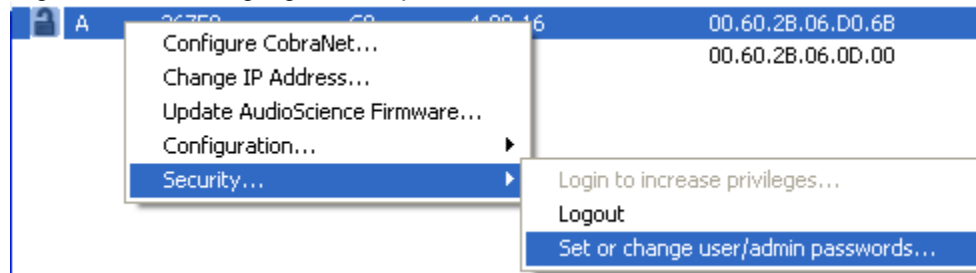
7.12.1.3 Guest

If passwords have been set, but the user has not logged on, the Guest privilege level is invoked. This is indicated in the ASiControl as:

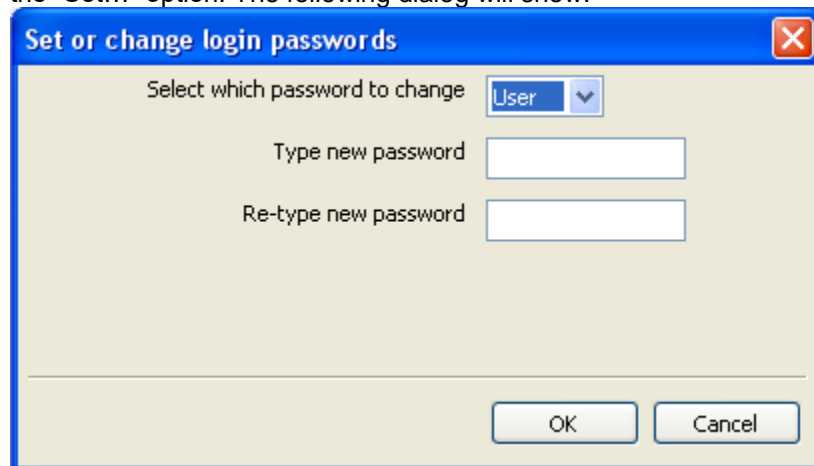


7.12.2 Setting passwords

Right click on the highlighted adapter and follow the menu tree to



the “Set...” option. The following dialog will show.



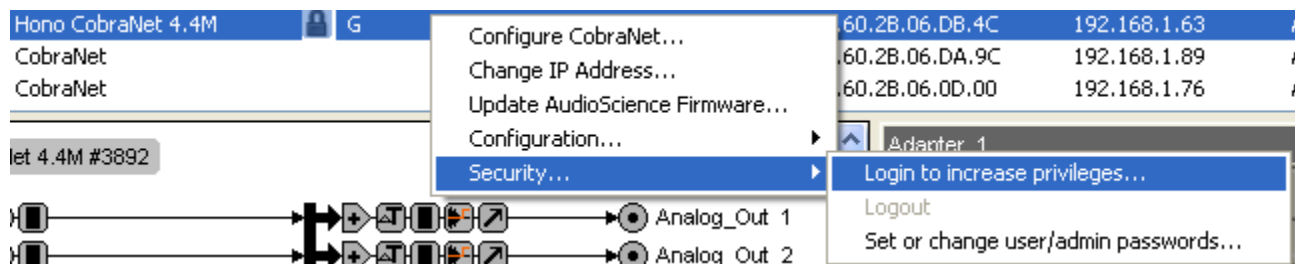
Select User or Admin from the first combo box and enter the new password in the two password fields.

Upon setting a password for the first time on a device that has never had a password before, Admin rights are assumed to be in place for the current user, so after setting the password the user should logout if they wish the adapter to be secured.

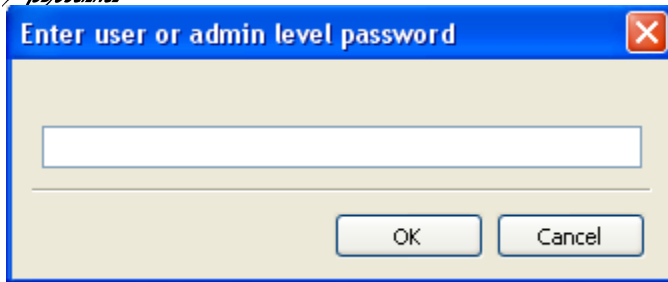
Note that on an PCI or PCIe adapter that has password support, the user should not power down or restart the PC within 30 seconds of changing the passwords. In other words, permanent storage of the updated passwords settings can take up to 30 seconds.

1.1.1.1 Logging in

Right click on the adapter in the list to login and increase user rights.

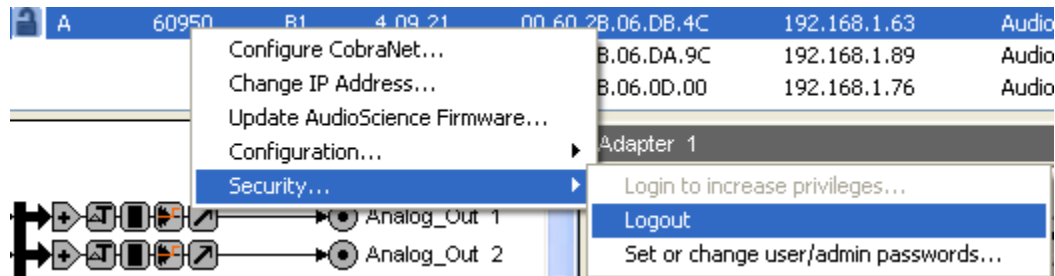


and enter the password for the access privilege level that you wish to use.



7.12.3 Logging out

After completing privileged operations, logout is performed by right clicking on the adapter and selecting the logout option.



8 COBRANET

ASiControl can be used to configure both AudioScience CobraNet devices and third party CobraNet devices, via its CobraNet Configuration dialog box. This dialog box can be used to configure CobraNet devices and assign names, locations, bundle numbers, channel assignments, etc. Third party applications such as CobraNet Discovery can also be used to configure AudioScience CobraNet devices.

Below lists how to set up AudioScience's software so ASiControl may be used to configure CobraNet.

NOTE: Under some Windows operating systems, ASiControl must be run as administrator in order to see all networked CobraNet devices. In Windows 7 this is done by right clicking on the ASiControl shortcut on the desktop and selecting "Run as administrator."

NOTE: Some antivirus programs and/or firewalls can prevent ASiControl from showing all CobraNet devices on a CobraNet network. If all CobraNet devices are not showing in the top pane of ASiControl, please check settings and/or turn off any antivirus programs or firewalls that may be running on the PC.

8.1 Setting Up AudioScience Software to Configure CobraNet

To configure an AudioScience CobraNet devices using ASiControl, the following must be in place: the AudioScience network driver must be installed, the networked adapters option must be selected in ASiControl, the AudioScience CobraNet device must be connected to the CobraNet network via an Ethernet cable, and the PC that is running ASiControl must also be connected to the same CobraNet network.

8.1.1 Install the Network Driver

When an AudioScience driver install EXE is run, three choices are made available as shown in the image below. Select "Install Standard + Network Audio Driver" when installing AudioScience CobraNet products, then run the driver install EXE as usual.

- ☐ Install Standard PCI/PCIe Driver.
- ☒ Install Standard + Network Audio Driver.
- ☐ Remove all driver components.

8.1.2 Select Networked Adapters in ASiControl

In ASiControl, go to the menu item Options, then select Configure adapter interface, as shown to the left.



Since ASiControl is used for both AudioScience's non-CobraNet adapters and CobraNet adapters, the correct interface must be selected when using ASiControl for CobraNet configuration. Click on menu item Options, then Configure adapter interface.

The Interface Selection dialog box opens; the default selection is "Local PCI(e) adapters. Select 'Local PCI(e) + Networked adapters.' then click OK.



ASiControl will restart, looking for all CobraNet devices on the network, assigning IP addresses where needed, and showing CobraNet devices on the network in its top pane.

8.1.3 Connect CobraNet Device to the Network

Plug one end of an Ethernet cable into the back of the AudioScience CobraNet device. Plug the other end into the CobraNet or test network.

8.1.4 Connect PC to the Network

CobraNet control is via SNMP. In order for ASiControl to establish an SNMP connection to an AudioScience (or other) CobraNet device(s) for configuring, a valid network path must be established between the PC running ASiControl and the AudioScience (or other) CobraNet device(s). This is done by plugging one end of an Ethernet cable into the back of the PC's network interface card (NIC) and plugging the other end into the CobraNet or test network.

If the PC running ASiControl must be connected to an office network and if the CobraNet network data is required to be separate from the office network, another NIC must be added to the PC; one for the office and one for CobraNet.

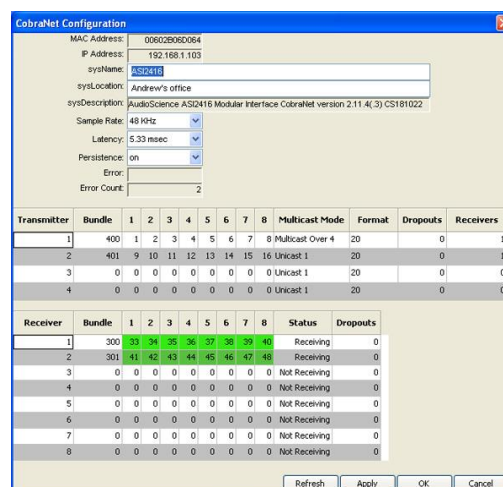
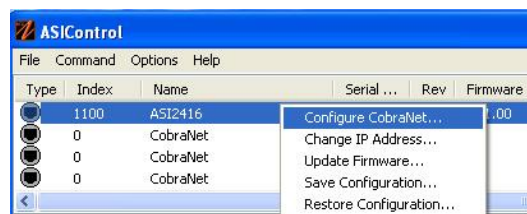
If the PC is on an office network and the CobraNet network data is not required to be separate from the office network, the PC can temporarily be removed from the office network and plugged into the CobraNet or test network. After the CobraNet configurations are made, the PC can be taken off the CobraNet network and placed back on the office network. **Note:** If any CobraNet configurations need to be changed in the future, the PC must be placed back on the CobraNet network in order to establish the SNMP connection.

If the PC does not need to be on an office network, plug it's NIC into the CobraNet or test network and either leave it there or remove it after configuring CobraNet. If it's removed, the PC must be connected to the CobraNet or test network again if CobraNet configurations need to be changed in the future.

Note: If plugging an AudioScience CobraNet device into an already existing CobraNet network, the PC must have the same IP address range as the CobraNet network in order for it to assign the AudioScience CobraNet device an IP address in the same range. Alternatively, if another CobraNet set-up application was used such as CobraNet Discovery, the same application may be used to assign an IP address and configure AudioScience CobraNet devices.

8.2 Configuring CobraNet Using ASiControl

The CobraNet Configuration dialog box is accessed via ASiControl, which is installed when the driver EXE is run. Double click on the ASiControl icon on the desktop, then in the top section right click on the CobraNet device and select Configure CobraNet... shown below left, and the CobraNet Configuration dialog box opens, shown below right.



8.2.1 CobraNet Configuration Interface

There are three main sections of the dialog box: the top shows the configuration section of the CobraNet device, the transmitter section is in the middle, and the receiver section is at the bottom. There are also four user control buttons on the bottom right.

8.2.1.1 CobraNet Device Configuration Section

MAC Address:

Read only; displays the MAC address of the CobraNet device.

IP Address:

Read only; displays the assigned IP address of the CobraNet device.

SysName:

Editable; a meaningful name can be given to a CobraNet device here.

SysLocation:

Editable; a physical location can be listed here for ease of reference.

SysDescription

Read only; lists the type of CobraNet interface.

Sample Rate:

48k (default) or 96 kHz. A CobraNet device must run at one sample rate only. Two CobraNet devices on the same network can each operate at a different sample rate.

Latency:

Choose between 1.33, 2.67, or 5.33 (default) ms.

Persistence:

On or off. When set to on, settings are saved to flash and will be restored after a restart.

Error:

Currently always blank, will show CobraNet specific error information in future versions.

Error Count:

Displays the number of errors that have occurred on the device. Some errors result from normal operation; disconnecting cables, rerouting, etc.

8.2.1.2 Transmitter Section

Transmitter:

Sends an audio bundle, made up of up to 8 audio channels, to a CobraNet receiver on the network.

Bundle:

The basic CobraNet audio routing component, can have 0 to 8 audio channels. Assign specific bundle numbers here.

Bundle numbers can be 0 and 1 – 65535

- 0 for turning transmitter off or for silence
- 1-255 for multicast
- 256-65279 for unicast
- 65280-65535 for private

1-8 Audio Channels:

The number of mapped channels from mixer to transmitter. Channels 0 (inactive) and 1-32 can be assigned. A 0 mapping of end channels 'shortens' the bundle; a mapping of 0 in the middle of mapping denotes silence.

Multicast Mode:

Double click to change setting in the dropdown list; use the following table to determine what setting to select:

Settings	Number of Receivers <= N	Number of Receivers > N
Multicast Bundle # < 256	Multicast	Multicast
Always	Multicast	Multicast
Unicast N	Unicast	Unicast if Receiver = 1-N Fail if Receiver > N
Multicast Over N	Unicast	Multicast

Format:

Double click to change the audio sample format to 16, 20, or 24 bits.

Dropouts:

The number of times the channel transmission has been interrupted. Interruptions can be caused by loss of transmit permission from conductor (i.e. conflict with another transmitter set to the same bundle number) or by changes to txBundle.

Receivers:

The number of receivers requesting this bundle.

8.2.1.3 Receiver Section

Receiver:

Can receive from a CobraNet transmitter on the network one bundle made up of up to 8 audio channels.

Bundle:

The basic CobraNet audio routing component; assign a specific Bundle number here. A Receiver can carry 0 (channel will not be mapped to mixer) to 8 audio channels.

1-8 Audio Channels:

The number of audio channels in the bundle to be routed to the particular Receiver; channels 0 (inactive) and 33-64 can be assigned.

Status:

Displays 'Receiving' when a bundle is successfully routed to it.

Dropouts:

Displays number of times bundle reception has been interrupted. Interruptions can be caused by transmitter failure or by reconfiguring the receiver.

8.2.1.4 User Control Buttons

Refresh:

Updates fields and statuses. If clicked before Apply, clears any changes made.

Apply:

Accepts changes and leaves dialog box open.

OK:

Accepts changes and closes dialog box.

Cancel:

Does not accept any changes made and closes dialog box.

8.3 How To Configure and Transmit a Bundle

The minimum configuring needed to test basic functionality of sending and receiving a bundle is to set a transmitter bundle and channels on one CobraNet device, and then set the receiver of another CobraNet device to the same bundle number, plus assign its channel numbers.

For example, an ASI6416 is installed in a computer, ASIControl is opened and is used to play a stereo audio file in the ASI6416's Player 1. The Repeat box is checked to have continuous audio playing.

ASIControl is then used to set the ASI6416's first transmitter to have bundle number and channel assignments. Double clicking in receiver 1's bundle field makes it editable and 255 (for example) is typed in. Double clicking in the receiver 1, channel 1 box makes it editable and 1 is typed in (numbers 0 and 1-32 can be used). Hitting the Tab key auto fills the rest of the channels. Since only two channels are needed, double clicking in the channel 3 box, typing in 0, and then hitting the Tab key changes channels 3-8 to have 0s in them. The OK button is clicked and the dialog box closes.

On the same CobraNet network is an ASI2416. Its CobraNet Configuration dialog box is opened using ASIControl. Using the same procedures as above, 255 is typed in (since 255 was used in the example above) as the bundle number for the ASI2416's receiver 1, and its first two channels are assigned numbers 33 and 34 (numbers 0 and 33-64 can be used). This time the Apply button is clicked so the dialog box remains open. Immediately in the CobraNet Configuration dialog box the first two channels in receiver 1 turn green and the Status field changes to 'Receiving' to indicate a bundle has been successfully routed to the receiver. If any errors, the receivers would turn red.

Clicking OK closes the CobraNet Configuration dialog box. ASIControl is still open and meter movement is seen in CobraNet_Ch 33 and 34, as well as Line_Outs 1 and 2.

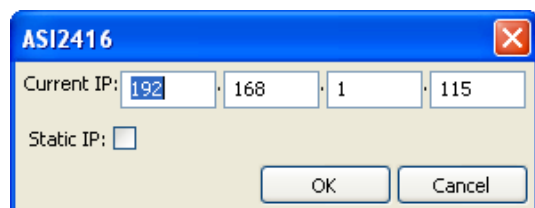
8.4 Change IP Address

Change the IP address of a CobraNet device here.

After right clicking on a CobraNet device in ASIControl and selecting "Change IP Address...", the dialog box below opens.



8.4.1 Interface



Current IP:

The CobraNet device's current IP address is shown. Double click in the fields to highlight the current number and overwrite it.

Static IP:

It is recommended to click on the Static IP checkbox to have a fixed IP address.

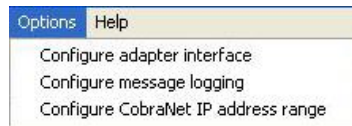
OK/Cancel:

Click OK to accept the changes and close the dialog box, or Cancel to not accept any changes and close the dialog box.

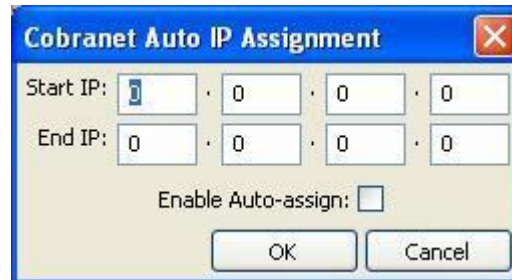
8.5 Configure CobraNet IP Address Range

Assign a starting and ending IP address range, and enable auto-assign here.

Click on ASiControl's menu item Options, then select Configure CobraNet IP address range. This opens the CobraNet Auto IP Assignment dialog box.

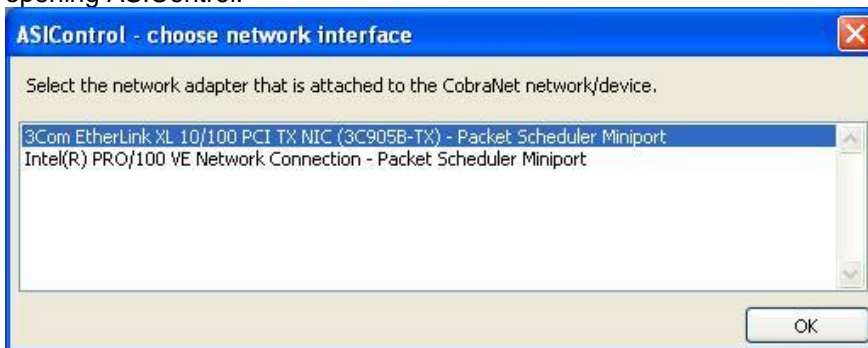


Type in the starting and stopping CobraNet IP address to be used. When Enable Auto-assign is checked, ASiControl assigns IP addresses to all discovered devices according to the IP address range. Click OK.



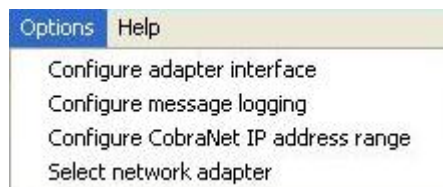
8.6 Choose a Network Interface

If a PC has more than one network interface card (NIC) in it, the following dialog box will pop up when first opening ASiControl:



Select the correct NIC that the CobraNet devices will be using, then click OK.

The network interface can be changed at any time. To change the NIC used, click on ASiControl's menu item Options, then Select network adapter. This opens the ASiControl – choose network interface dialog box.



NOTE: If Select network adapter is not showing under Options, close and then reopen ASiControl.

8.7 CobraNet References

http://cirrus.com/en/pubs/appNote/CobraNet_AudioRoutingPrimer.pdf

http://cirrus.com/en/pubs/manual/CobraNet_Programmer_Manual_PM25.pdf

http://www.cirrus.com/en/support/cobranet/design/switched_networks.html

9 ASICONTROL COMMAND LINE OPTIONS

ASiControl has the ability to run configuration commands from the command line. The specified action is run and ASiControl will exit without ever bringing up the ASiControl GUI. The configuration information is stored in XML format.

Note – as of driver version 3.10, the save/restore function does not process CobraNet controls.

Basic command line calling format is:

asictrl Command File Adapter Flag

and is implemented as follows:

Command

[SaveCfg|RestoreCfg] this field tells ASiControl which command to execute.

Default

None. This is a required field.

File

For convention sake, the file extension should be .xml.

Default

None. This is a required field.

Adapter

[<adapter index>|<adapter ip_address>|ALL|NETALL] this field tells ASiControl which adapter configurations to save or restore.

Default

ALL. see below

ALL

All local PCI/PCIe configurations are saved to the specified file.

NETALL

All local PCI/PCIe and networked adapters' configurations are saved to the specified file.

adapter index

Only the adapter with the specified index is saved. The first PCI adapter in a system is referenced using adapter index 1.

ip address

Only the adapter with the specified IP address is saved.

Flag

[create|overwrite|append] this setting controls file operations for SaveCfg only.

Default

create see below.

create

create the file and add the specified adapter configurations; fails if the file exists

append

creates or opens the file and adds section(s) for specified adapters; fails if a section exists for a specified adapter

overwrite

creates or opens the file and adds or overwrites section(s) for specified adapters

Examples:

To save settings for the first adapter in the system go

```
asictrl SaveCfg ASI6114_1.xml 1
```

To restore go

```
asictrl RestoreCfg ASI6114_1.xml
```

10 PROGRAMMING APIS

AudioScience provides a number of APIs for interfacing to its audio adapters. This section briefly describes the interfaces and where to locate further documentation on them.

10.1 HPI

The HPI interface is an AudioScience specific interface that is support on all AudioScience products, including the ASI2416. It is the low level interface on which all AudioScience drivers across all operating system are built (including Linux).

Under Windows, HPI calls are surfaced to a client application via a DLL. All Windows drivers support the HPI calling interface.

An SDK and online documentation is available on the AudioScience website:

<http://www.audioscience.com/internet/download/sdk/sdk.htm>

10.2 ASX

The ASX interface is supported on all operating systems, including Linux. It is an AudioScience specific interface that supports file level record and playback. The client application does not have to provide and buffer management routines, or create threads to feed audio to /from the audio adapter.

ASiControl is built on top of the ASX interface. It provides interfaces to all features of AudioScience adapters.

An SDK and online documentation is available on the AudioScience website:

<http://www.audioscience.com/internet/download/sdk/sdk.htm>

10.3 Wave

The Wave interface is only implemented under Microsoft Windows. It uses standard Microsoft compatible waveOutXXX(), waveInXXX() and mixerXXXX() calls to play, record and mix audio. Where possible AudioScience's implementation is 100% compatible with other multimedia cards running under Windows.

See the references section below for a link to spcwavx.pdf that details multimedia extensions that AudioScience has implemented to provide access to advanced audio features.

AudioScience has implemented some extensions to the standard wave API to provide access to advanced audio features. Documentation on these APIs may be found here:

SPCWAVX.PDF - [WavX - AudioScience Windows Multimedia Extensions](#)

10.4 DirectSound

The WDM driver provides a native DirectSound interface to AudioScience sound cards. Use the standard DirectSound APIs provided by Microsoft.

10.5 ASIO

All AudioScience Windows drivers support the ASIO programming interface. The ASIO driver is installed by default, but is only activated by an ASIO client application.

10.6 ALSA

Under Linux, the ALSA sound programming API is supported. From version 1.0.7, snd-asihpi is part of the standard ALSA driver source. PCM and Mixer APIs are supported.

For more details, see the Linux download page on the AudioScience website:

http://www.audioscience.com/internet/download/linux_drivers.htm

10.7 References

HPI User Manual - [Hardware Programming Interface \(HPI\) Reference Manual](#)

SPCWAVX.PDF - [WavX - AudioScience Windows Multimedia Extensions](#)

These documents are available from www.audioscience.com in the Documentation section.

<end>